



# End swing check valve WCA

TYPE WCA-SS4



Manufacturing  
water treatment  
solutions.

**Website:**  
[www.aqua-plus.ma](http://www.aqua-plus.ma)

**Mail:**  
[contact@aqua-plus.ma](mailto:contact@aqua-plus.ma)

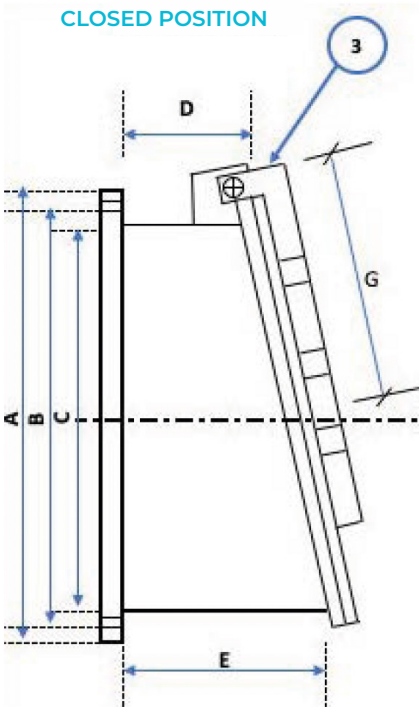
**Follow us on:**  
[f](#) [@](#) [in](#) [@aqua-plus.maroc](#)

### 316L Stainless Steel End Check Valve Type WCA-SS4

The WCA-SS4 model of circular non-return nose cone valve is specifically designed to prevent the backflow of raw, wastewater, or rainwater during downstream surges. It inhibits water from rising through pipelines during heavy rains, storms, or floods, thereby safeguarding water treatment facilities and combined sewer networks."

#### PRODUCT DESCRIPTION

- Sizes ranging from DN150 to DN2000
- PN10 flange connection
- Mechanically welded construction in 316L stainless steel
- Operates through water pressure upstream and downstream for opening and closing. Hydraulic operation available upon request for rapid opening applications (e.g., stormwater reservoirs, etc.)
- Designed according to DIN 19569 standard

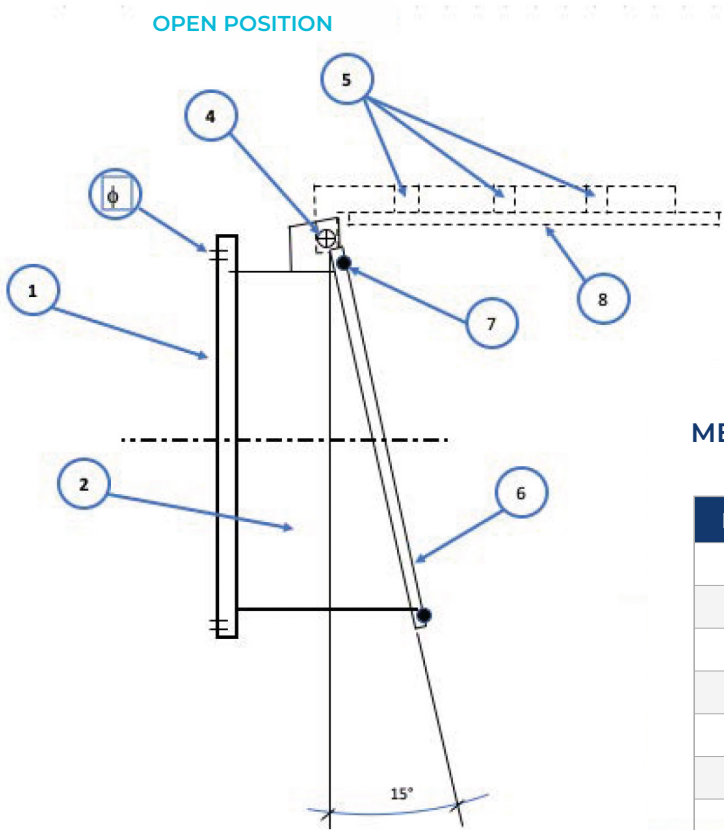


#### SPECIFICATIONS

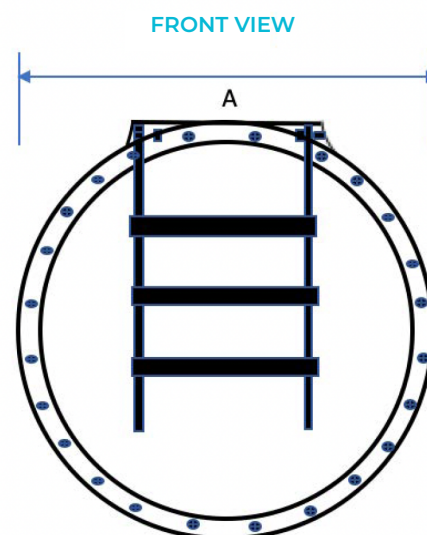
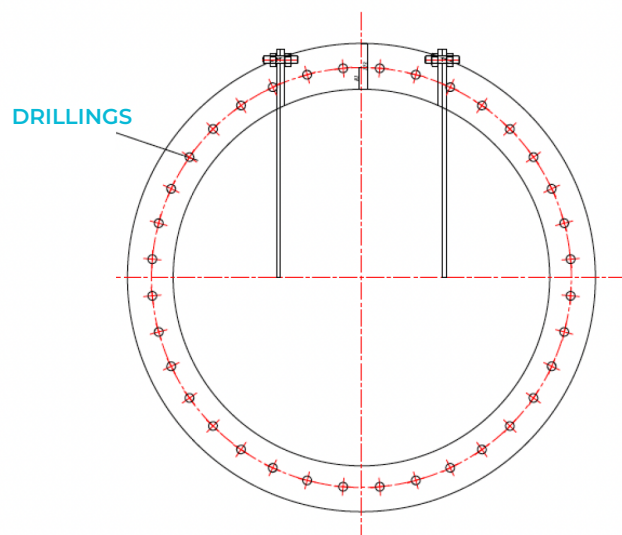
- Double articulation flap valve ensuring flap closure and optimal sealing.
- EPDM o-ring seal design.
- Mounting options: wall-mounted, embedded in civil engineering with a metal flange upon request, or standard flange mounting.
- Leakage rate according to DIN 19569-4 Class 3 standard.

#### METALLURGY

N	ART.	MATERIAL
1	PN10 flange	316L stainless steel
2	Body	316L stainless steel
3	lever	316L stainless steel
4	Lever pivots	316L stainless steel
5	axes	316L stainless steel
6	Counterweights	316L stainless steel
7	O-ring	EPDM
8	Check valve	316L stainless steel



## End swing check valve in stainless steel



## TECHNICAL SPECIFICATIONS

ITEM	DN	C	A	B	D	E	G		
WCA600	DN600	600	780	725	300	485	425	107	20 x M27
WCA700	DN700	700	895	840	300	513	483	132	24 x M27
WCA800	DN800	800	1015	950	300	543	543	169	24 x M30
WCA900	DN900	900	1115	1050	300	569	593	196	28 x M30
WCA1000	DN1000	1000	1230	1160	300	598	650	229	28 x M30
WCA1200	DN1200	1200	1450	1400	300	654	760	323	32 x M30
WCA1400	DN1400	1400	1765	1590	300	723	918	565	36 x M30
WCA1600	DN1600	1600	On Request						
WCA2000	DN2000	2000	On Request						

These dimensions are for reference only. Do not use these dimensions for installation procedures. Please request the fabrication drawing from the Technical Service.



**Site web:**

[www.aqua-plus.ma](http://www.aqua-plus.ma)

**E-mail:**

[contact@aqua-plus.ma](mailto:contact@aqua-plus.ma)

**Suivez-nous sur:**

   [@aquaplus.maroc](#)